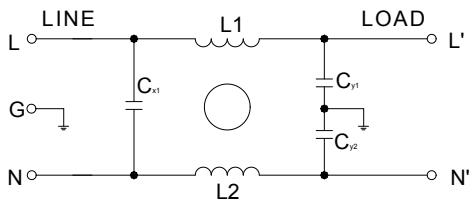


## 一、产品特点

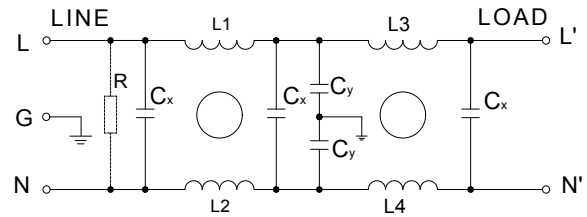
- 插针式 PCB 板安装，结构紧凑，性价比高；
- 适用于各种电力电子设备、电子测量仪器；
- 可根据客户要求定制。



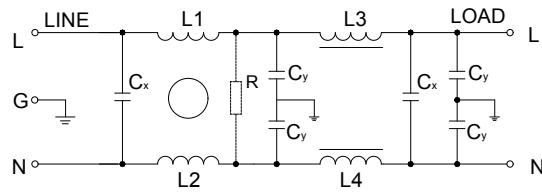
## 二、电路类型



01



08



07

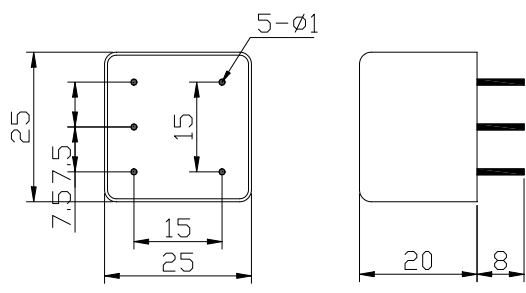
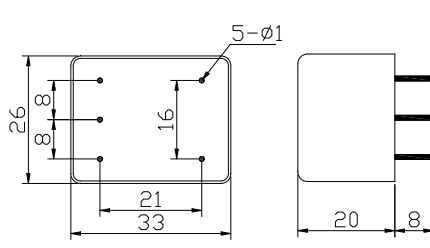
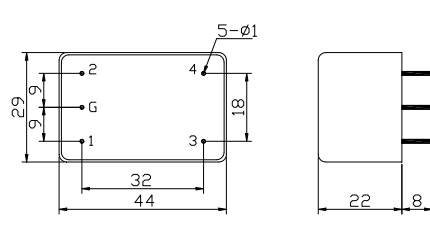
## 三、技术参数

额定电压	250VAC	
工作频率	50/60Hz	
耐压实验	线对线	1500VDC, 1min
	线对地	2000VAC, 1min
温度范围	-25℃—+85℃	

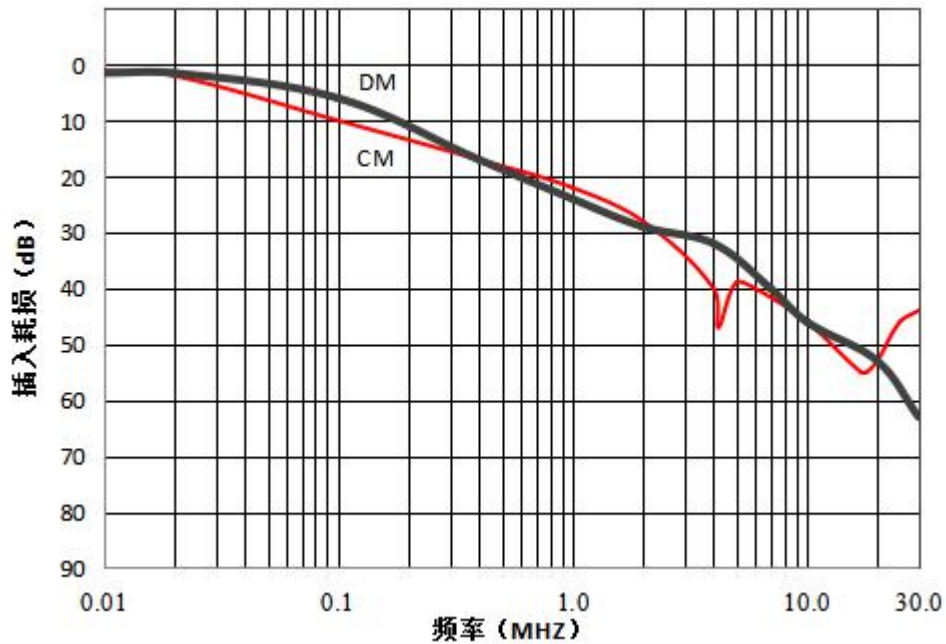
## 四、产品列表

规格型号	额定电流 (A)	最大泄漏电流 (mA)	外形尺寸
JDF01-1A1P	1	0.3	A1
JDF01-3A1P	3	0.3	A1
JDF01-6A1P	6	0.3	A1
JDF01-1A2P	1	0.3	A2
JDF01-3A2P	3	0.3	A2
JDF01-6A2P	6	0.3	A2
JDF07-1A5P	1	0.5	A5
JDF07-3A5P	3	0.5	A5
JDF08-1A5P	1	0.5	A5
JDF08-3A5P	3	0.5	A5

## 五、外形尺寸

 <p>Technical drawing showing top and side views of the JDF01-1A1, JDF01-3A1P, and JDF01-6A1P filter. Dimensions include a 25x25mm footprint, 5 mounting holes (5-ø1), and a 20x8mm base.</p>	 <p>Technical drawing showing top and side views of the JDF01-1A2P, JDF01-3A2P, and JDF01-6A2P filter. Dimensions include a 33x26mm footprint, 5 mounting holes (5-ø1), and a 20x8mm base.</p>
<p><b>JDF01-1A1、JDF01-3A1P、JDF01-6A1P</b></p>	<p><b>JDF01-1A2P、JDF01-3A2P、JDF01-6A2P</b></p>
 <p>Technical drawing showing top and side views of the JDF07-1A5P, JDF07-3A5P, JDF08-1A5P, and JDF08-3A5P filter. Dimensions include a 44x29mm footprint, 5 mounting holes (5-ø1), and a 22x8mm base.</p>	
<p><b>JDF07-1A5P、JDF07-3A5P、JDF08-1A5P、JDF08-3A5P</b></p>	

## 六、插入损耗



## 七、安装说明

- 1 安装位置：滤波器安装的最佳位置应在电源线入口处，以缩短输入线在机箱内的长度，减少辐射干扰的空间耦合；
- 2 接地：滤波器的接地必须良好。对于金属外壳的滤波器，外壳必须与设备机箱进行低阻抗连接，即外壳必须与机箱面板面导电接触，并接好地线；
- 3 滤波器输入端和输出端的布线：滤波器的输入线、输出线必须拉开距离，切忌并行走线，以避免输入线缆和输出线缆间发生耦合而旁路了滤波器，造成滤波器失效。