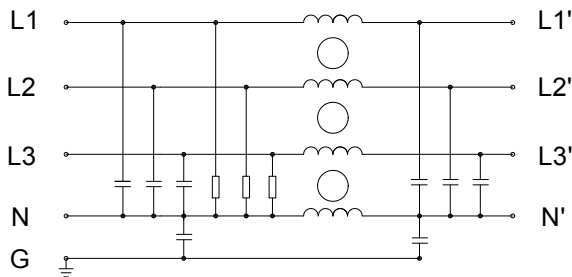


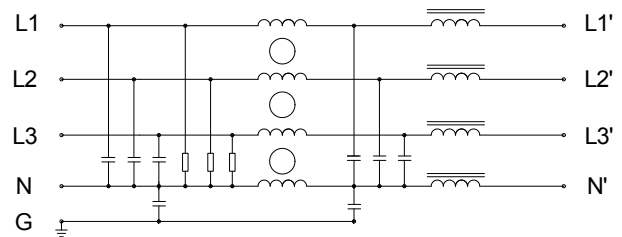
一、产品特点

<ul style="list-style-type: none"> ●具有优异的共模、差模干扰抑制特性； 	
<ul style="list-style-type: none"> ●常规通用、性价比高、易于安装； 	
<ul style="list-style-type: none"> ●可根据客户需求特殊定制。 	

二、电路类型



12

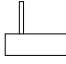
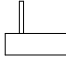










14

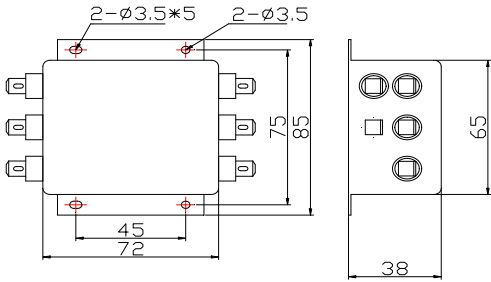
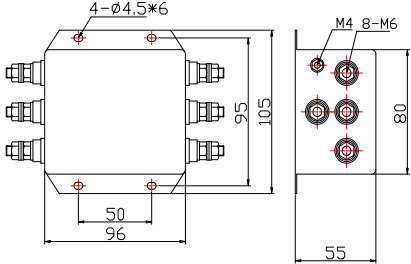
三、技术参数

额定电压	440VAC	
工作频率	50/60Hz	
耐压实验	线对线	2250VDC, 1min
	线对零	1450VDC, 1min
	线对地	2700VDC, 1min
温度范围	-25℃—+85℃	

四、产品列表

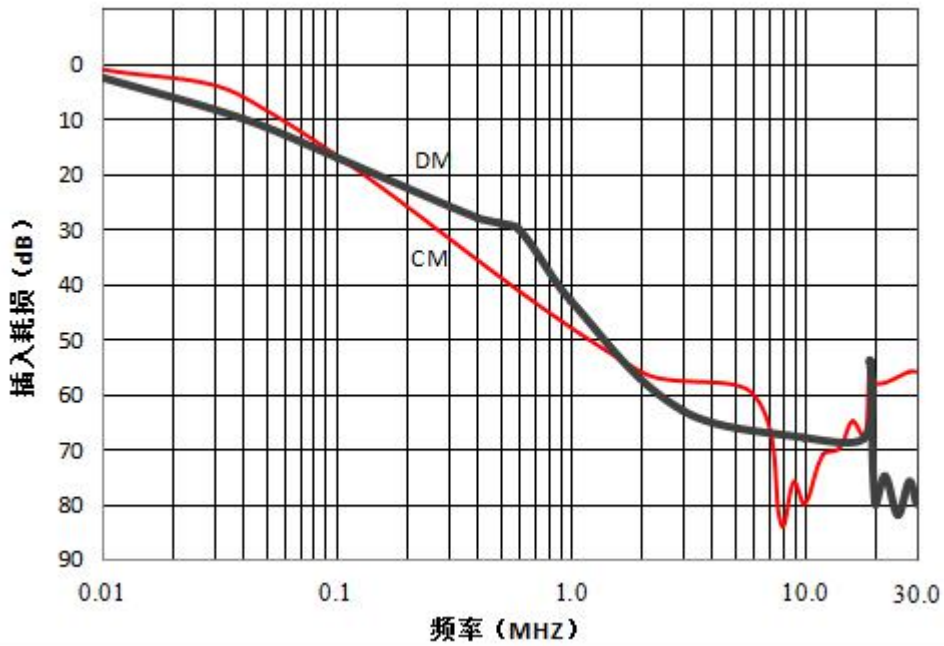
规格型号	额定电流 (A)	最大泄露电流(mA)	端接方式	外形尺寸
JDF12-6B5L	6	0.3		B5
JDF12-10B5L	10	0.3		B5
JDF12-20C3S	20	0.5		C3
JDF12-50C5S	50	0.5		C5
JDF14-20C5S	20	0.3		C5
JDF12-100D6S	100	0.3		D6
JDF14-50D6S	50	0.3		D6
JDF12-200D7S	200	0.5		D7
JDF14-100D7S	100	0.5		D7
JDF14-200D7S	200	0.5		D7

五、外形尺寸

 <p>Dimensions for JDF12-6B5L, JDF12-10B5L: Top view: 2-$\phi 3.5 \times 5$, 2-$\phi 3.5$, 45, 72, 75, 85. Side view: 38, 65.</p>	 <p>Dimensions for JDF12-20C3S: Top view: 4-$\phi 4.5 \times 6$, 50, 96, 95, 105. Side view: M4 8-M6, 80, 55.</p>
<p>JDF12-6B5L、JDF12-10B5L</p>	<p>JDF12-20C3S</p>

JDF12-50C5S、JDF14-20C5S	JDF12-100D6S、JDF14-50D6S
<p style="text-align: center;">JDF12-200D7S、JDF14-100D7S、JDF14-200D7S</p>	

六、插入损耗



七、安装说明

- 1 安装位置：滤波器安装的最佳位置应在电源线入口处，以缩短输入线在机箱内的长度，减少辐射干扰的空间耦合；
- 2 接地：滤波器的接地必须良好。对于金属外壳的滤波器，外壳必须与设备机箱进行低阻抗连接，即外壳必须与机箱面板面导电接触，并接好地线；
- 3 滤波器输入端和输出端的布线：滤波器的输入线、输出线必须拉开距离，切忌并行走线，以避免输入线缆和输出线缆间发生耦合而旁路了滤波器，造成滤波器失效。