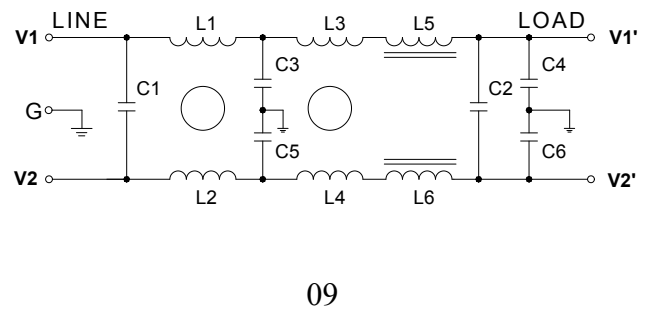
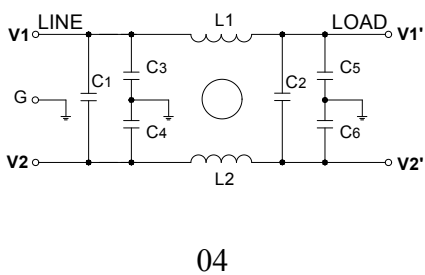
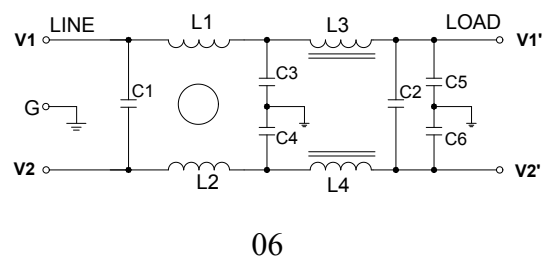
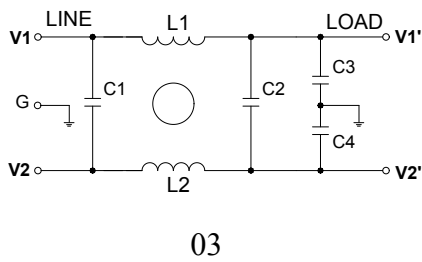


## 一、产品特点

- 具有优良的共模、差模干扰抑制特性；
- 可根据客户要求定制。





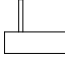








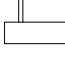
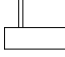




## 二、电路类型



## 三、技术参数

额定电压	100VAC	
工作频率	50/60Hz	
耐压实验	线对线	200VDC, 1min
	线对地	500VDC, 1min
温度范围	-25℃—+85℃	

## 四、产品列表

规格型号	额定电流 (A)	端接方式	外形尺寸
JDF03-3A4W	3		A4
JDF03-6A8W	6		A8
JDF03-10A6L	10		A6
JDF03-20A6S	20		A6
JDF04-3A4W	3		A4
JDF04-6A4W	6		A4
JDF04-10A6L	10		A6
JDF04-20A7S	20		B7
JDF06-1A4W	1		A4
JDF06-3A4W	3		A4
JDF06-6A8W	6		A8
JDF06-6A6L	6		A6
JDF06-10B6L	10		B6
JDF06-20B2S	20		B2
JDF06-20B8S	20		B8
JDF06-30C1S	30		C1
JDF06-50C4S	50		C4

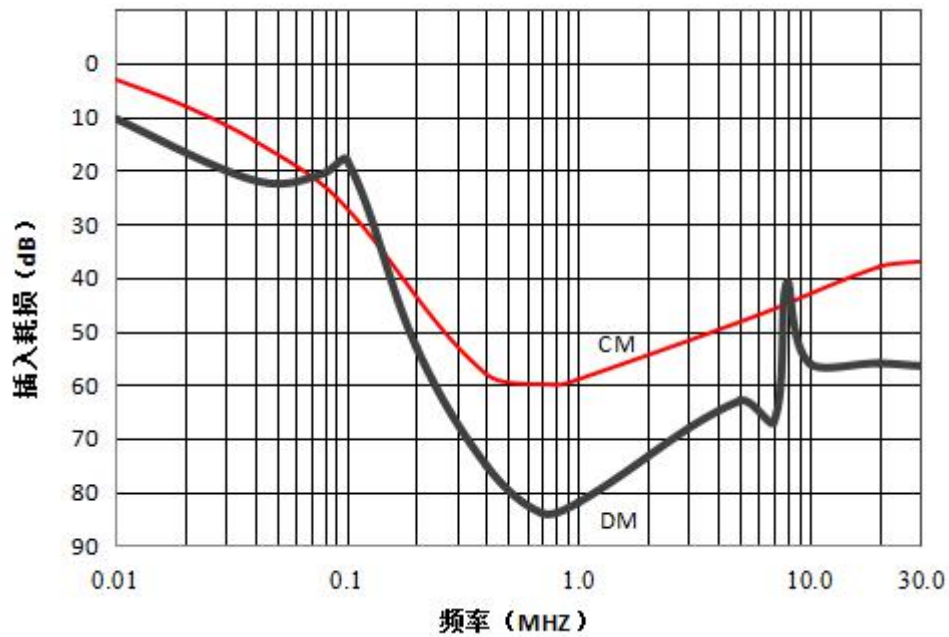
<b>JDF06-100C7S</b>	<b>100</b>		<b>C7</b>
<b>JDF09-6B3L</b>	<b>6</b>		<b>B3</b>
<b>JDF09-10B3L</b>	<b>10</b>		<b>B3</b>
<b>JDF09-20C1S</b>	<b>20</b>		<b>C1</b>

## 五、外形尺寸

<p><b>JDF03-3A4W、JDF04-3A4W、JDF04-6A4W、 JDF06-1A4W、JDF06-3A4W</b></p>	<p><b>JDF03-6A8W、JDF06-6A8W</b></p>
<p><b>JDF03-10A6L、JDF04-10A6L、 JDF06-6A6L</b></p>	<p><b>JDF04-20A7S</b></p>
<p><b>JDF06-10B6L</b></p>	<p><b>JDF04-20B7S</b></p>

<p><b>JDF09-6B3L、JDF09-10B3L</b></p>	<p><b>JDF06-20B2S</b></p>
<p><b>JDF06-20B8S</b></p>	<p><b>JDF06-30C1S、JDF09-20C1S</b></p>
<p><b>JDF06-50C4S</b></p>	<p><b>JDF06-100C7S</b></p>

## 六、插入损耗



## 七、安装说明

- 1 安装位置：滤波器安装的最佳位置应在电源线入口处，以缩短输入线在机箱内的长度，减少辐射干扰的空间耦合；
- 2 接地：滤波器的接地必须良好。对于金属外壳的滤波器，外壳必须与设备机箱进行低阻抗连接，即外壳必须与机箱面板面导电接触，并接好地线；
- 3 滤波器输入端和输出端的布线：滤波器的输入线、输出线必须拉开距离，切忌并行走线，以避免输入线缆和输出线缆间发生耦合而旁路了滤波器，造成滤波器失效。